



JANUARY 2012

After School Program

Drama Drama!

I truly hope that each and every one of you thoroughly enjoy your Christmas and ring in the new year with joy and enthusiasm. I know I certainly look forward to spending more time with our delightful ASP kids and sharing all the adventures that 2012 will provide. We have some great things planned this year, and the first one approaching is our Dinner and a Play that will be held in February. We will be spending some time in January preparing ourselves for a wonderful



performance. Drama: Week Two will be the week of January 25th through 27th. Drama: Week Three will be January 30th through February 3rd and Dra-

ma: It's a Wrap will be February 6th through February 9th. We will be presenting our play the evening of February 9th. Invitations to come! During our Drama weeks, please pick up your child after 5:00pm on days that it is convenient for you. I appreciate your cooperation in helping me to prepare the kids for their performance. They have all shown excitement in creating this play for you and I can't wait to see the final production!



Madison-- January 11th
James-- January 21st
Marissa-- January 30th

January Payment Due January 3rd

| | |
|---------------|--------------|
| January 3-6 | \$40 |
| January 9-13 | \$50 |
| January 17-20 | \$40 |
| January 25-27 | \$30 |
| TOTAL | \$160 |

January 16th, 23rd, and 24th are No-School days. All-Day care will be offered and provided if we reach a 5-child minimum. Those who sign up will be responsible for a payment of \$20 per day.

Kid of the Month: Madison

Madison is our kid of the month because she worked so hard and earned the highest overall steps in our race over the last three weeks! She is friendly and fun.

Madison's favorite color is **GOLD** and she likes to eat **CHOCOLATE!** Her favorite movie is "The Nightmare Before Christmas". Her birthday is

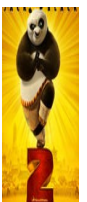


January 11th so lets all wish her a Happy



Friday Free Flicks

January 13th
7:00 pm



Picture from www.moviefone.com