

EMERALD LANDING DRIVE

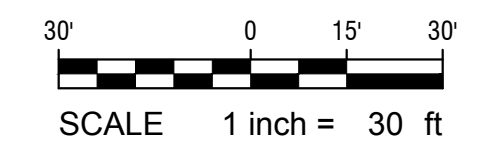
MALLARD DRIVE

CREW DRIVE

EMERALD DRIVE
ROADWAY ELEV. = 13.5±
200' RIGHT-OF-WAY
44'± EX. PAVEMENT WIDTH

①
3.893 AC. ±
PROPOSED GROCERY STORE
(31,568 SF)

②
1.766 AC. ±



DATE	COMMENTS

REVISIONS:

CROSLAND SOUTHEAST

SKETCH PLAN 6.0

EGRET LANDING SHOPPING CENTER

EMERALD DRIVE & EMERALD LANDING DRIVE

EMERALD ISLE, CARTERET CO., NORTH CAROLINA

NC License: P-1199

ARK Consulting Group, PLLC
Engineers & Planners

3280 Charles Blvd. | Suite B
Greenville, NC 27656
(252) 336-0888
www.arkconsultinggroup.com

SITE BENCHMARK
NCGS "LOON"
NAD 83(2011)
PUBLISHED COORDINATES
N 337612.53'
E 2586398.21'
ELEV=12.87' NAVD 88
CCF=0.99993028

Project Manager:	BCF
Drawn By:	EW
Checked By:	STA
Project Number:	15035
Drawing Number:	D-1081

1 of 1

Date:

© 2015 Ark Consulting Group, LLC. Project Name: Egret Landing Shopping Center. Scale: As Shown. Date: 11/13/15. Project No: 15035. Drawing No: D-1081.