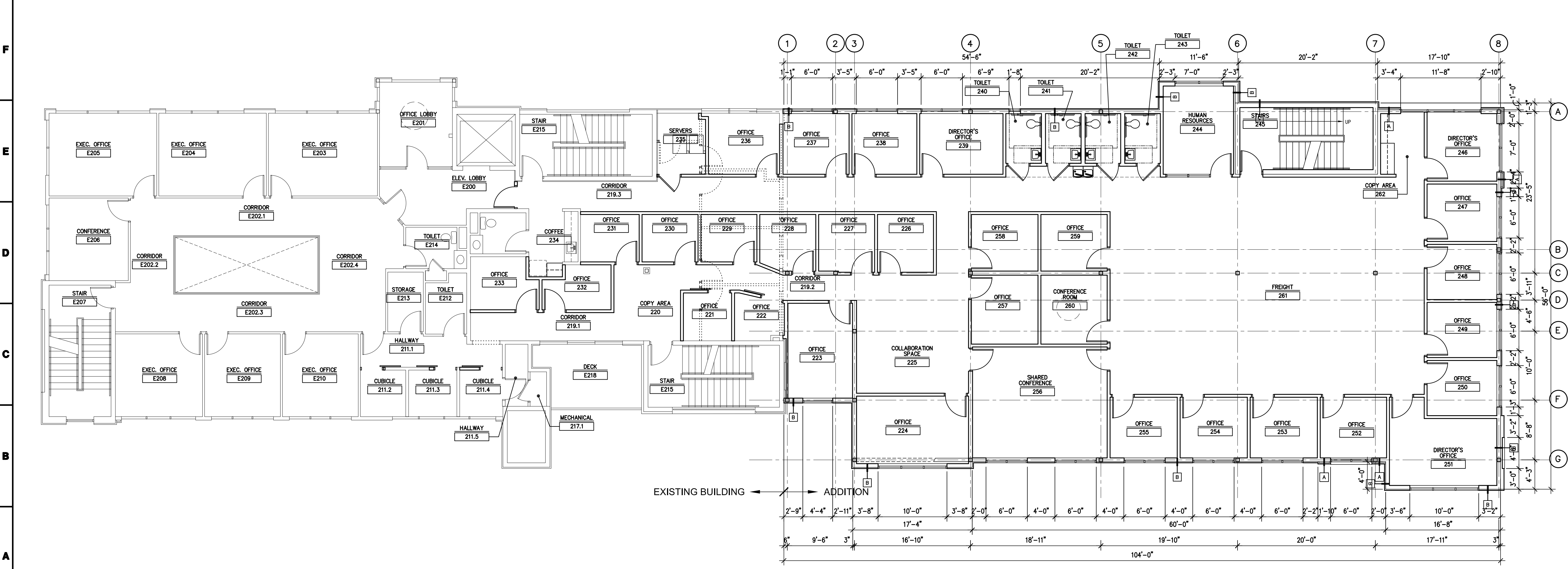


1G 2ND FLOOR REFERENCE PLAN

SCALE: 1/8" = 1'-0"



1A 2ND FLOOR DIMENSION PLAN

SCALE: 1/8" = 1'-0"

GENERAL NOTES:

- ALL EXISTING CONSTRUCTION, FINISHES, AND EQUIPMENT SHOWN ARE TO REMAIN UNLESS NOTED OTHERWISE.
- FIELD VERIFY ALL EXISTING CONDITIONS AND DIMENSIONS PRIOR TO THE START OF WORK.
- ALL DIMENSIONS ARE TO FACE OF STUD / CMU BLOCK, UNLESS NOTED OTHERWISE. DIMENSION FOR MULTI-WYTHE WALLS ARE TO THE FACE OF THE PRIMARY STRUCTURAL CMU BLOCK.

CONSTRUCTION NOTES:

- 1
- 2
- 3
- 4
- 5
- 6
- 7
- 8
- 9
- 10
- 11
- 12
- 13
- 14
- 15
- 16
- 17

ROOM FINISH LEGEND:

	ROOM NUMBER
	WALL FINISH
	BASE MATERIAL
	FLOOR FINISH

WALL FINISH

P	PAINT
CT	CERAMIC TILE

BASE MATERIAL

R	RUBBER BASE
CT	CERAMIC TILE
EP	EPOXY BASE (INTEGRAL W/ EPOXY FLOOR SYSTEM)

FLOOR FINISH

CPT	CARPET TILE
CT	PORCELAIN TILE
VCT	VINYL COMPOSITION TILE
EP	EPOXY FLOORING
WD	HARDWOOD FLOOR SYSTEM: DANZAIRE WOOD SPRUNG FLOOR BY ROBBINS FLOORING, OR APPROVED EQUAL

WALL LEGEND

EXISTING WALL (NOT LABELED)

A	EXTERIOR WALL (TYPICAL): 6" METAL STUDS @ 16" O.C. W/ 1/2" G.W.B. ON INTERIOR FACE, 5/8" PLYWOOD, WATER BARRIER, & ENDURAMAX WALL SYSTEM ON EXTERIOR FACE.
B	EXTERIOR WALL (TYPICAL): 6" METAL STUDS @ 16" W/ 3/8" G.W.B. ON INTERIOR FACE, 5/8" DENSGLASS SHEATHING, WATER BARRIER, E.I.F.S. OVER 2" CONTINUOUS INSULATION, ON EXTERIOR FACE.
C	EXTERIOR WALL: 2HR RATED 8" CONCRETE

PRELIMINARY FOR REVIEW ONLY NOT FOR CONSTRUCTION
 GREAT PEOPLE
WIMCO
 BUILDING SMART
Transportation Impact Addition Building Shell Emerald Isle, NC
 401 North Heritage Street
 Kinston, North Carolina 28501
 phone: 252-527-1523
 web: dunnaldton.com
DUNN & DALTON ARCHITECTS
 Issue Date: 1-4-19
 Revisions:
A1.2

THIS DRAWING IS THE PROPERTY OF DUNN & DALTON, ARCHITECT, P.A. THIS DRAWING IS NOT TO BE COPIED IN WHOLE OR IN PART. THIS DRAWING OR THE INFORMATION HEREON IS NOT TO BE USED ON ANY OTHER PROJECT AND MUST BE RETURNED TO DUNN & DALTON, ARCHITECTS, P.A. UPON REQUEST. COPYRIGHT 2019, DUNN & DALTON, ARCHITECTS, P.A.